



Pointe Place Townhomes

FLOOR PLANS AND RATES

2022

COMMUNITY CENTER

The Pointe Place Community Center offers indoor and outdoor event space for residents. This hub of activity is large enough to accommodate the whole Pointe Place neighborhood, while comfortable enough for a relaxing game night among friends.

From the kitchen and serving island to the cozy chairs and fireplace, this space was made for convenient entertaining. During warmer months, the wrap-around patio sets the scene for grilling, picnics, and watching the sun set. When your extended family arrives for your annual holiday festivities, host your feast in the community center. The possibilities are only limited by your imagination!



REDEFINING SENIOR LIVING

You can make your vision for active, independent retirement living a reality. Pointe Place is the area's first-of-its-kind 62+ townhome community, which is also backed by the promise of continuing care less than two miles away at Chapel Pointe (should you ever need it). Pointe Place strikes the perfect balance between independence and assurance for your future.

Experience all of the social benefits, security, and conveniences of the maintenance-free lifestyle plus the freedom to expand your horizons and enjoy the local community. Nestled against Dickinson Park, Pointe Place is within walking distance of wooded paths, gardens, restaurants, a gym, and Carlisle's cultural downtown. A daily round-trip shuttle helps residents to take advantage of Chapel Pointe's amenities and activities.

Pointe Place includes a community center and 12 townhomes nestled on two acres. Townhomes come in 1,000- and 1,250-square-foot floor plans constructed to feel bright and spacious. The deliberately designed single-story layouts and plethora of available services mean you can live in your townhome as long as you desire.

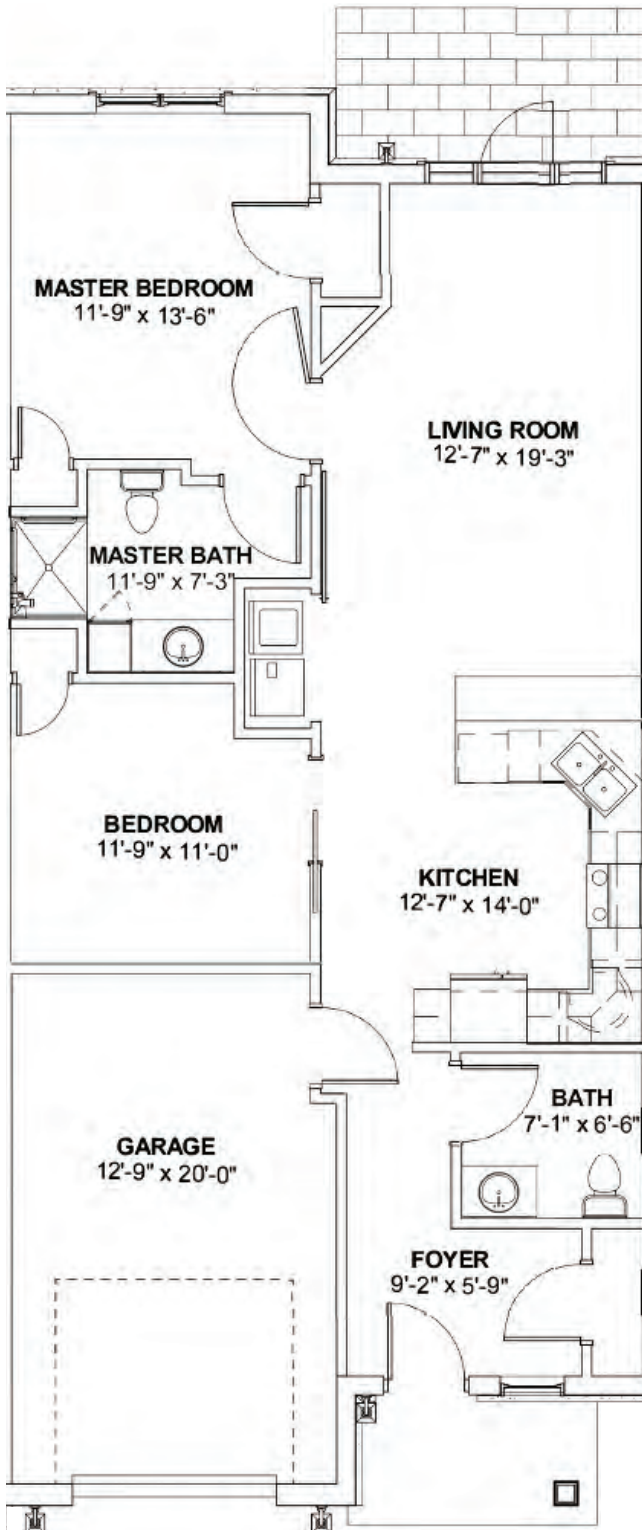
To schedule your personal tour, call 717-249-1363.

ChapelPointe.org | info@chapelpointe.org | Pointe Place, 13 Pointe Place, Carlisle, PA 17013

FLOOR PLANS

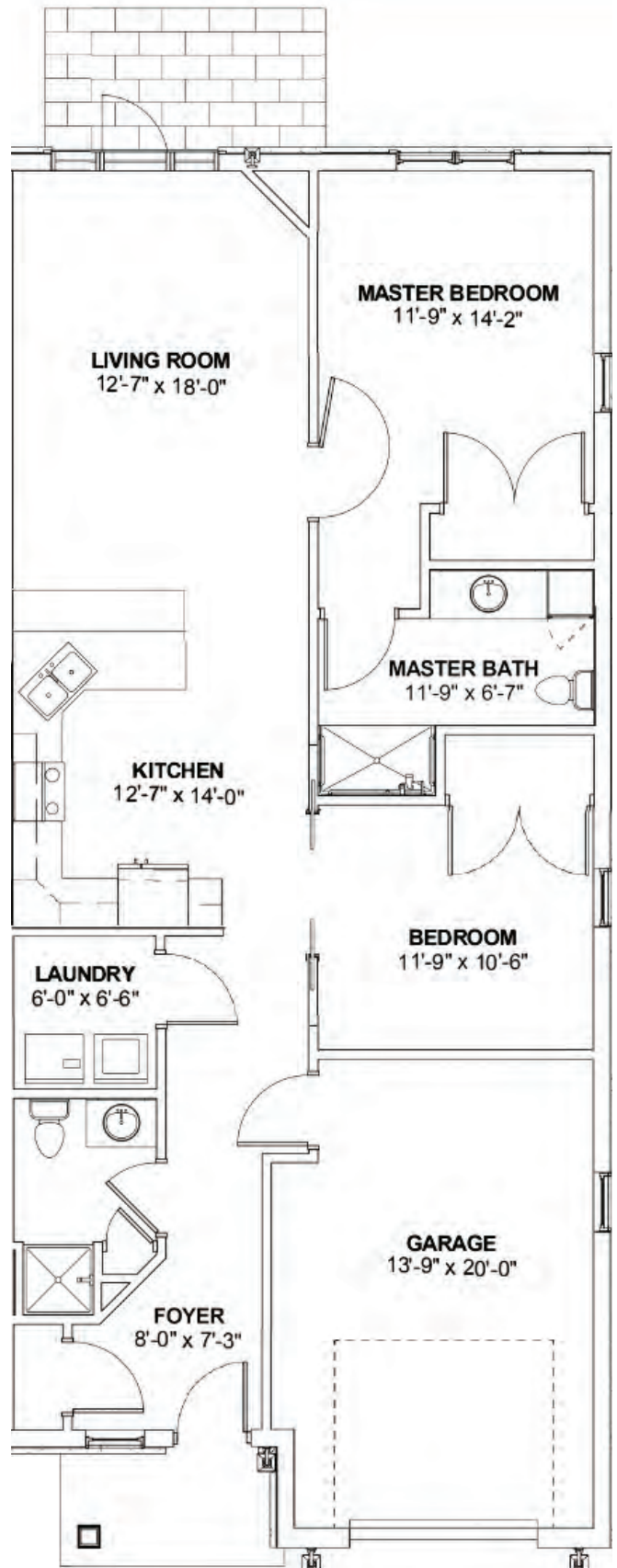
1,000 sq FT TOWNHOME

2 bedrooms, 1.5 bathrooms, garage



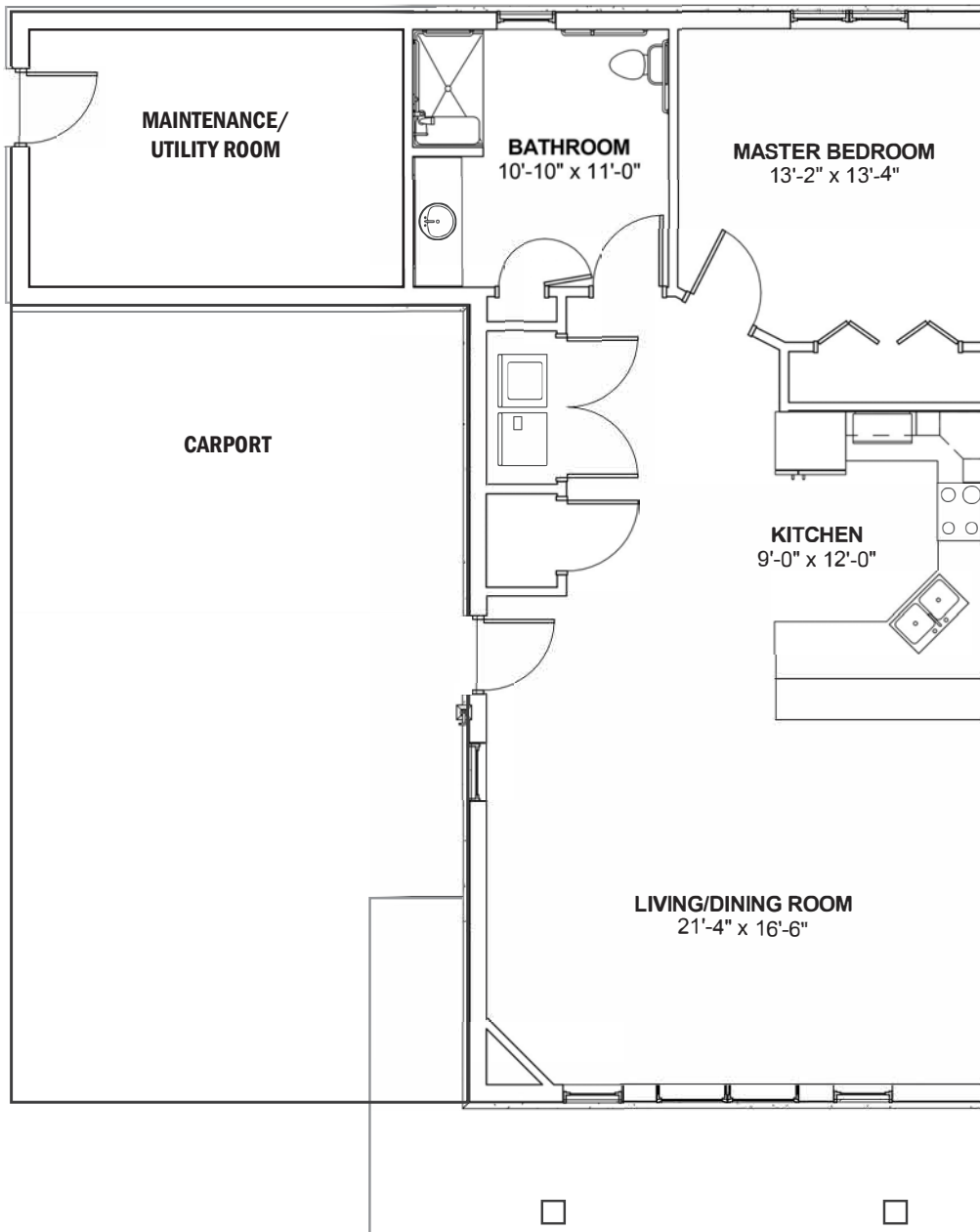
1,250 sq FT TOWNHOME

2 bedrooms, 2 bathrooms, garage



1,000 sq FT TOWNHOME WITH WHEELCHAIR ACCESS

1 bedroom, 1 bathroom, carport



POINTE PLACE TOWNHOME FEATURES

- 24/7 Medical alert system
- Attic storage
- Cable TV
- Comfort-height toilets
- Dishwasher
- Fire detection system & sprinklers
- Garage or spacious carport
- Garbage disposal
- Gas fireplace
- High-speed Internet
- Meganite® countertops
- Microwave
- Open-concept floor plan
- Cooking range
- Patio with privacy fence
- Refrigerator/freezer with water & ice dispenser
- Single-story living
- Smart home enabled
- Storage- & safety-conscious cabinetry design
- Vaulted ceilings
- Video surveillance of property
- Walk-in shower with seat & hand-held shower head
- Washer & dryer

ALL-INCLUSIVE MONTHLY FEE

This simple payment keeps your life maintenance-free and includes all of your utilities:

Resident Favorites

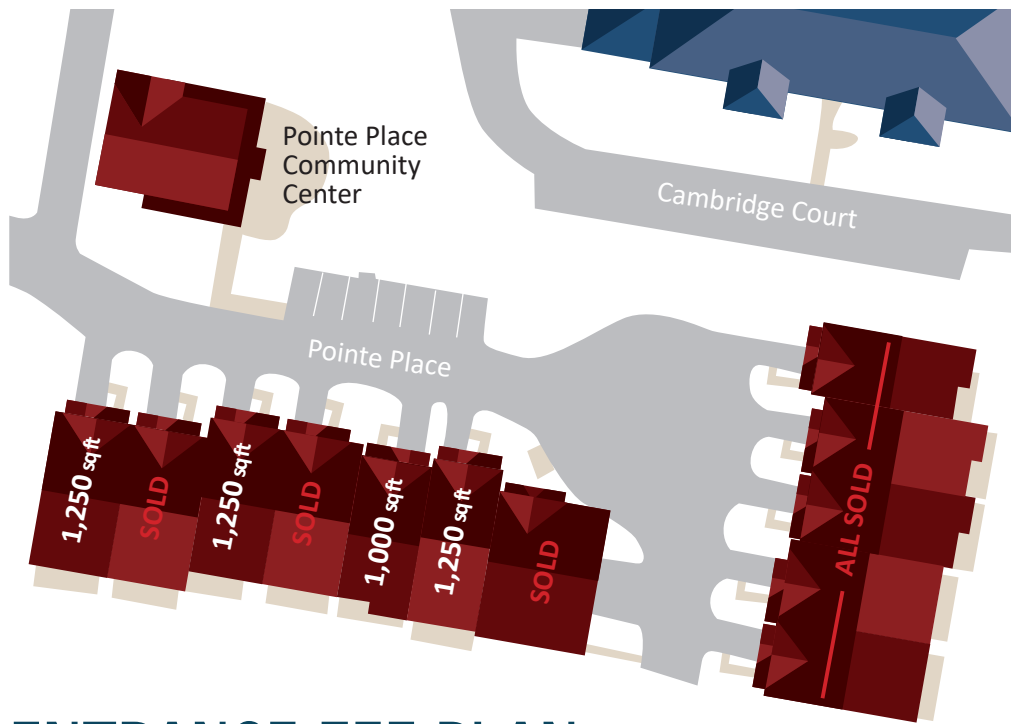
- 24/7 medical alert system notifies professionals for quick medical attention
- 24/7 fire response system with sprinkler network
- Cable TV (100+ channels)
- High speed Internet & router
- Landscaping & lawn care
- Home maintenance, inside & out
- Use of the Pointe Place Community Center
- A calendar of social & recreational activities
- Community App account for on-demand access to events, menus, people, & services

Monthly Fee Also Includes

- Air conditioning & heat
- Annual window washing
- Carbon monoxide detector
- Electricity
- Fire extinguisher
- Insurance consultant
- Maintenance of supplied appliances
- Property insurance
- Real estate taxes
- Road maintenance & snow removal
- Scheduled shuttle transit
- Trash removal
- Water & sewer

Available For An Added Fee

- Smart home package - \$800
- Meals - \$6.25-\$9.25
- Home care - \$27/hour



ENTRANCE FEE PLAN

We want you to feel confident about your future, so we've structured our rates so you gain financial, physical, and emotional security.

Townhomes operate under a partially refundable entrance fee plan. The entrance fee is like an insurance policy; it allows you to buy in to Chapel Pointe's continuum of care. You gain the assurance that you have priority access to health care services if you ever need them.

Your financial security at Pointe Place has three elements:

- If you move out of your townhome up to five years after moving in, you will receive a partial refund of your entrance fee.
- We group your major expenses into one monthly fee, so you can expect a consistent cost of living regardless of the national economic climate.
- Because of Chapel Pointe's benevolence ministry, if you run out of funds, the entrance fee you paid guarantees that you will always have a home through Chapel Pointe.

WE'VE SIMPLIFIED MOVING!

When you reserve a townhome, you'll receive **20 hours of free downsizing assistance**. Plus, we've doubled our move-in time, so you'll have **6 full months to move!**

TOWNHOME RATES	ENTRANCE FEE PLAN		
	ENTRANCE FEE	MONTHLY FEE	
		Single	Double
1,000 sq ft Townhome	\$189,000	\$1,000	\$1,225
1,250 sq ft Townhome	\$199,000	\$1,200	\$1,425

Rates are subject to change to account for the cost-of-living adjustment.